



350/350 L

EXCAVATOR

Maximums (based on boom):

- Digging depth with:
 - 7200 mm/23'8" boom.....9570 mm(31'5")
 - 6700 mm/22'0" boom.....7960 mm(26'10")
- Reach at ground level with:
 - 7200 mm/23'8" boom.....13 450 mm(44'2")
 - 6700 mm/22'0" boom.....11 930 mm(39'2")
- Bucket capacity ranges
 - Reach1.3-2.2 m³(1.70-2.88 yd³)
 - Mass1.3-2.6 m³(1.70-3.40 yd³)

Cat® Turbocharged ATAAC

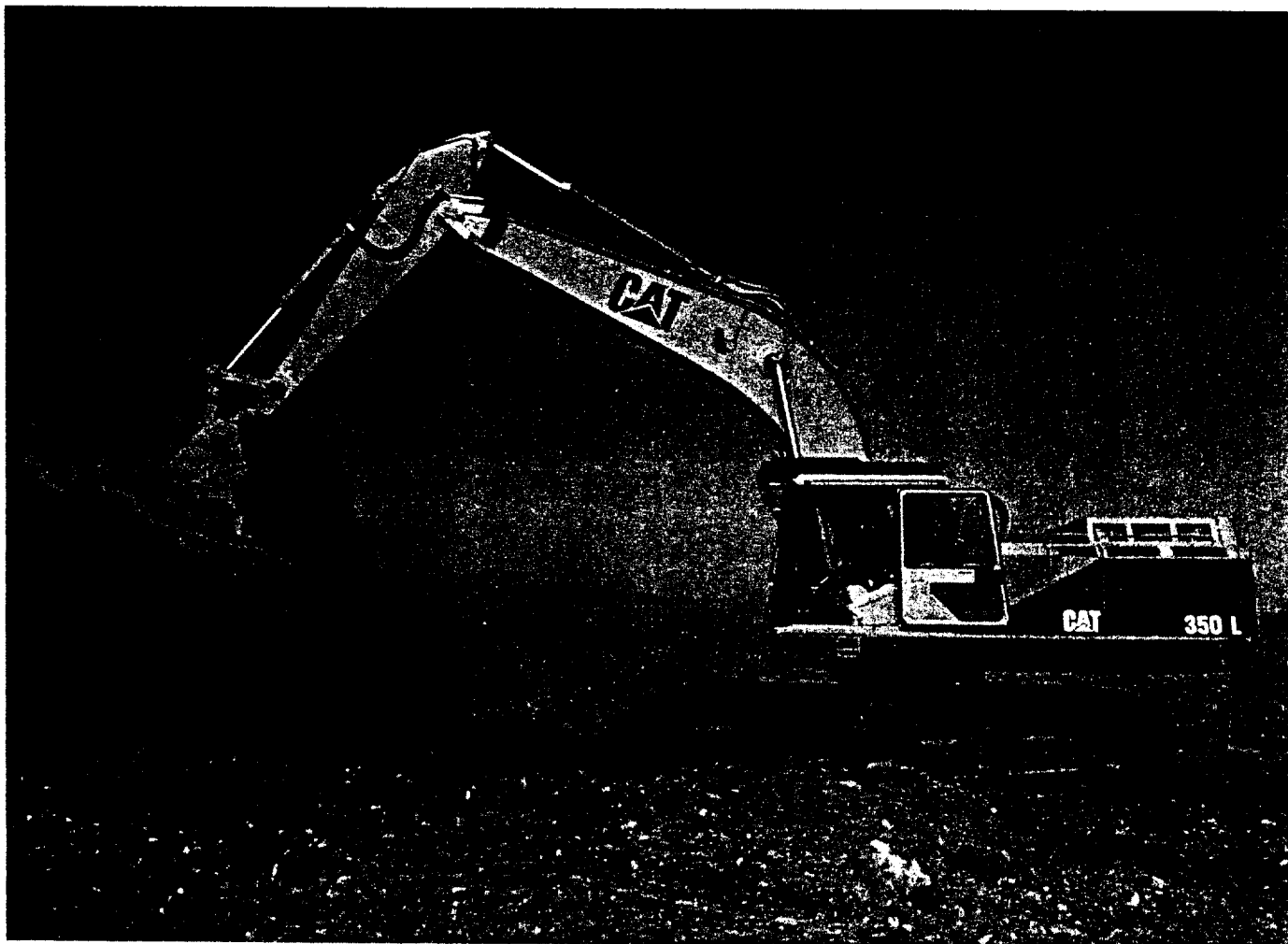
- 3306 Engine.....213 kW(286 HP)
- Maximum Travel Speed4.6 km/h(2.9 MPH)
- Maximum Drawbar Pull34 300 kg(75,600 lb)
- Operating Weights:
 - 35047 350 kg(104,390 lb**)
 - 350 L49 820 kg(109,830 lb***)

Featured machines may include additional equipment applicable only for special applications. See your authorized Caterpillar dealer for available options.

* Operating weight will vary according to machine configuration.

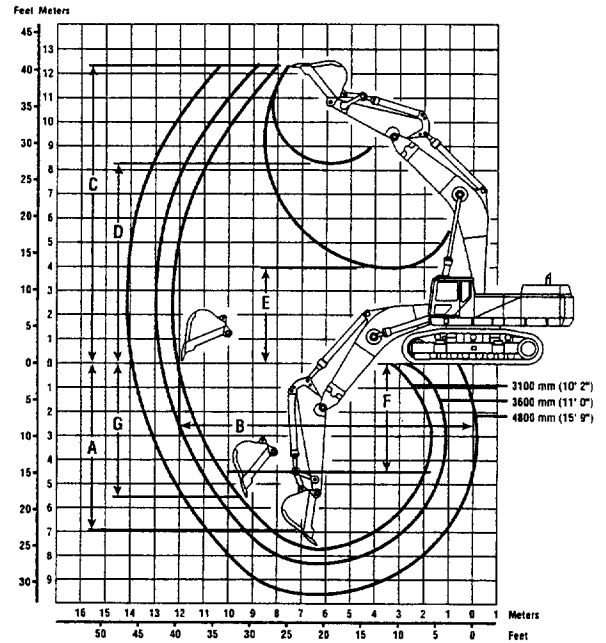
** Reach boom, R3.6F stick, 600 mm TG shoes

*** Mass excavation boom, M3.0G stick, 750 mm TG shoes.

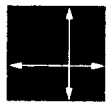


350/350 L

350 Reach Excavator Working Ranges



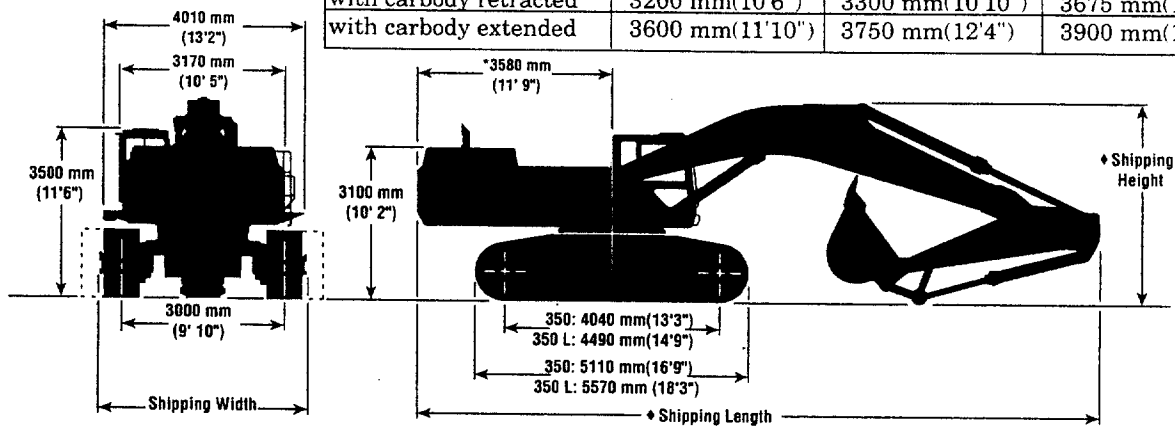
	R4.8F	R3.6F	R3.1F
Stick	4800 mm(15'9")	3600 mm(11'10")	3100 mm(10'2")
Bucket	1.3 m ³ (1.7 yd ³)	1.9 m ³ (2.5 yd ³)	2.0 m ³ (2.6 yd ³)
A Maximum digging depth	9570 mm(31'5")	8370 mm(27'6")	7820 mm(25'8")
B Maximum reach at ground level	13 450 mm(44'2")	12 330 mm(40'5")	11 810 mm(38'9")
C Maximum cutting height	12 070 mm(39'7")	11 620 mm(38'2")	11 380 mm(37'4")
D Maximum loading height	8450 mm(27'9")	7990 mm(26'3")	7850 mm(25'9")
E Minimum loading height	1710 mm(5'7")	2910 mm(9'7")	3460 mm(11'4")
F Maximum digging depth at 2440 mm (8') level bottom	9180 mm(30'1")	7980 mm(26'2")	7440 mm(24'5")
G Maximum vertical wall digging depth	8180 mm(26'10")	7090 mm(23'3")	6600 mm(21'8")
Bucket forces	21 800 kg(48,060 lb)	21 700 kg(47 840 lb)	22 300 kg(49,160 lb)



Dimensions (approximate)

	R4.8FH	R3.6F	R3.1F
Stick	4800 mm(15'9")	3600 mm(11'10")	3100 mm(10'2")
Shipping height	4570 mm(15'0")	3750 mm(12'4")	3930 mm(12'11")
Shipping length	12 190 mm(40'0")	12 200 mm(40'0")	12 270 mm(40'3")

Shipping Width	600 mm(24")	750 mm(30")	900 mm(36")
with carbody retracted	3200 mm(10'6")	3300 mm(10'10")	3675 mm(12'1")
with carbody extended	3600 mm(11'10")	3750 mm(12'4")	3900 mm(12'10")



♦ Varies with stick

* Swing tail radius

Excavators

Lifting Capacities At Ground Level
 • 350L

6/6/01

ATT: SLAVKO

FROM: DAN AMARUSO

Japan/U.S. Sourced

50L

Mass Boom • 750 mm (30") Triple Grousers

Stick	Bucket	3.0 m (10')		4.5 m (15')		6.0 m (20')		7.5 m (25')		9.0 m (30')		At Max. Reach		
		Front	Side	Front	Side	Front	Side	Front	Side	Front	Side	Front	Side	
3700 mm 12'2"	F1735X 5'8"	kg lb	6850* 15,550*	6850* 15,550*	19 650* 45,700*	19 000* 40,750*	14 900* 32,200*	12 000* 25,750*	11 350* 24,550*	8400 18,050	9150* 19,750*	6200 13,300	2700* 5950*	2700* 5950*
2950 mm 9'8"	G1770X 5'10"	kg lb	—	—	18 400* 42,900*	18 400* 39,550*	14 900* 32,150*	11 600* 24,850*	11 300* 24,400*	8100 17,400	8950* 19,300*	5950 12,700	4350* 9550*	4350* 9550*
2400 mm 7'10"	G1895MX 6'3"	kg lb	—	—	18 000* 42,150*	18 000* 39,050*	14 850* 32,100*	11 450* 24,550*	11 300* 24,450*	8050 17,200	—	—	6400* 14,150*	5050 11,100

Belgium Sourced

150L

Reach Boom • 750 mm (30") Track Shoes

Stick	Bucket	4.5 m (15')		6.0 m (20')		7.5 m (25')		9.0 m (30')		10.5 m (35')		At Max. Reach		
		Front	Side	Front	Side	Front	Side	Front	Side	Front	Side	Front	Side	
2.7 m 8'10"	2.4 m³ 3.1 yd³	kg lb	8200* 18,080*	8200* 18,080*	14 720* 32,450*	11 820* 26,060*	11 210* 24,710*	8350 18,410	8900 19,620	6200 13,670	—	—	4020* 8860*	4020* 8860*
3.1 m 10'2"	2.2 m³ 2.87 yd³	kg lb	12 360* 27,250*	12 360* 27,250*	14 980* 33,030*	12 160* 26,810*	11 420* 25,180*	8640 19,050	9150* 20,170*	6470 14,260	—	—	5160* 11,370*	4540* 10,010*
3.6 m 11'10"	2.0 m³ 2.6 yd³	kg lb	13 790* 30,400*	13 790* 30,400*	14 830* 32,700*	12 270* 27,050*	11 270* 24,850*	8710 19,200	9050* 19,950*	6500 14,330	15,980*	11,000	3720* 8200*	3720* 8200*
4.8 m 15'9"	1.8 m³ 2.3 yd³	kg lb	16 570* 36,530*	16 570* 36,530*	13 980* 30 820*	12 650* 27,890*	10 620* 23,410*	8950 19,730	8580* 18,910*	6600 14,550	7220* 15,920*	5100 11,240	2810* 6190*	2810* 6190*

Mass Boom • 750 mm (30") Track Shoes

Stick	Bucket	3.0 m (10')		4.5 m (15')		6.0 m (20')		7.5 m (25')		9.0 m (30')		At Max. Reach		
		Front	Side	Front	Side	Front	Side	Front	Side	Front	Side	Front	Side	
2.4 m 7'10"	2.4 m³ 3.1 yd³	kg lb	—	—	18 140* 39,990*	18 140* 39,990*	14 730* 32,470*	11 890* 26,210*	11 250* 24,800*	8390 18,490	—	—	6360* 14,020*	5280 11,640
3.0 m 9'10"	2.4 m³ 3.1 yd³	kg lb	—	—	18 390* 40,540*	18 390* 40,540*	14 690* 32,390*	11 990* 26,430*	11 150* 24,580*	8400 18,520	8820* 19,440*	6170 13,600	4260* 9390*	4260* 9390*
3.7 m 12'2"	2.2 m³ 2.87 yd³	kg lb	5990* 13,200*	5990* 13,200*	18 580* 40,960*	18 580* 40,960*	14 650* 32,300*	12 360* 27,250*	11 110* 24,490*	8650 19,070	8890* 19,600*	6350 14,000	2630* 5790*	2630* 5790*

350L Heavy Lift

Reach Boom • 750 mm (30") Track Shoes

Stick	Bucket	4.5 m (15')		6.0 m (20')		7.5 m (25')		9.0 m (30')		10.5 m (35')		At Max. Reach		
		Front	Side	Front	Side	Front	Side	Front	Side	Front	Side	Front	Side	
2.7 m 8'10"	2.4 m³ 3.1 yd³	kg lb	8860* 19,530*	8860* 19,530*	16 070* 35,430*	11 820* 26,060*	12 270* 27,050*	8350 18,410	9780* 21,560*	6200 13,670	—	—	4410* 9720*	4410* 9720*
3.1 m 10'2"	2.2 m³ 2.87 yd³	kg lb	13 270* 29,260*	13 270* 29,260*	16 320* 35,980*	12 160* 26,810*	12 470* 27,490*	8640 19,050	10 030* 22,110*	6470 14,260	—	—	5600* 12,340*	4540 10,010
3.6 m 11'10"	2.0 m³ 2.6 yd³	kg lb	14 790* 32,610*	14 790* 32,610*	16 160* 35,630*	12 270* 27,050*	12 310* 27,140*	8710 19,200	9920* 21,870*	6500 14,330	7830* 17,260*	4990 11,000	4070* 8970*	4070* 8970*
4.8 m 15'9"	1.8 m³ 2.3 yd³	kg lb	17 990* 39,660*	17 990* 39,660*	15 240* 33,600*	12 650* 27,890*	11 620* 25,620*	8950 19,730	9420* 20,771*	6660 14,680	7220* 15,920*	5100 11,240	2810* 6190*	2810* 6190*

Mass Boom • 750 mm (30") Track Shoes

Stick	Bucket	3.0 m (10')		4.5 m (15')		6.0 m (20')		7.5 m (25')		9.0 m (30')		At Max. Reach		
		Front	Side	Front	Side	Front	Side	Front	Side	Front	Side	Front	Side	
2.4 m 7'10"	2.4 m³ 3.1 yd³	kg lb	—	—	19 430* 42,840*	18 860* 41,580*	16 080* 35,450*	11 890* 26,210*	12 320* 27,160*	8390 18,490	—	—	6880* 15,170*	5280 11,640
3.0 m 9'10"	2.4 m³ 3.1 yd³	kg lb	—	—	19 710* 43,460*	19 060* 42,020*	16 030* 35,340*	11 990* 26,430*	12 210* 26,920*	8400 18,520	9710* 21,410*	6170 13,600	4670* 10,290*	4670* 10,290*
3.7 m 12'2"	2.2 m³ 2.87 yd³	kg lb	6530* 14,390*	6530* 14,390*	19 920* 43,920*	19 650* 43,320*	15 970* 35,210*	12 360* 27,250*	12 150* 26,790*	8650 19,070	9770* 21,540*	6350 14,000	2930* 6460*	2930* 6460*

*Load limited by hydraulic capacity rather than tipping.

Japan/U.S. Sourced

375

Reach Boom • 610 mm

Stick	Bucket	4.5 m (15')		6.0 m (20')		7.5 m (25')		9.0 m (30')		At Max. Reach				
		Front	Side	Front	Side	Front	Side	Front	Side	Front	Side			
5500 mm 18'1"	H1380T 4'6"	kg lb	10 400* 24,050*	10 400* 24,050*	19 650* 45,700*	19 000* 40,750*	14 900* 32,200*	12 000* 25,750*	11 350* 24,550*	8400 18,050	9150* 19,750*	6200 13,300	2700* 5950*	2700* 5950*
4400 mm 14'5"	H1800X 5'10"	kg lb	9600* 22,250*	9600* 22,250*	18 400* 42,900*	18 400* 39,550*	14 900* 32,150*	11 600* 24,850*	11 300* 24,400*	8100 17,400	8950* 19,300*	5950 12,700	4350* 9550*	4350* 9550*
3400 mm 11'2"	J1780X 5'10"	kg lb	—	—	18 000* 42,150*	18 000* 39,050*	14 850* 32,100*	11 450* 24,550*	11 300* 24,450*	8050 17,200	—	—	6400* 14,150*	5050 11,100
2900 mm 9'6"	J1865X 6'1"	kg lb	—	—	—	—	—	—	—	—	—	—	—	—

Stick	Bucket	4.5 m (15')		6.0 m (20')		7.5 m (25')		9.0 m (30')		10.5 m (35')		At Max. Reach		
		Front	Side	Front	Side	Front	Side	Front	Side	Front	Side	Front	Side	
5500 mm 18'1"	H1380T 4'6"	kg lb	13 650 29,300	13 650 29,300	14 720* 32,450*	11 820* 26,060*	11 210* 24,710*	8350 18,410	8900 19,620	6200 13,670	—	—	4020* 8860*	4020* 8860*
4400 mm 14'5"	H1800X 5'10"	kg lb	13 350 28,600	13 350 28,600	14 980* 33,030*	12 160* 26,810*	11 420* 25,180*	8640 19,050	9150* 20,170*	6470 14,260	—	—	5160* 11,370*	4540* 10,010*
3400 mm 11'2"	J1780X 5'10"	kg lb	12 700 27,250	12 700 27,250	14 830* 32,700*	12 270* 27,050*	11 270* 24,850*	8710 19,200	9050* 19,950*	6500 14,330	15,980*	11,000	3720* 8200*	3720* 8200*
2900 mm 9'6"	J1865X 6'1"	kg lb	12 650 27,100	12 650 27,100	13 980* 30 820*	12 650* 27,890*	10 620* 23,410*	8950 19,730	8580* 18,910*	6600 14,550	7220* 15,920*	5100 11,240	2810* 6190*	2810* 6190*

375

GP Boom • 610 mm

Stick	Bucket	4.5 m (15')		6.0 m (20')		7.5 m (25')		9.0 m (30')		At Max. Reach				
		Front	Side	Front	Side	Front	Side	Front	Side	Front	Side			
5500 mm 18'1"	H1380T 4'6"	kg lb	13 700* 31,600*	13 700* 31,600*	18 140* 39,990*	18 140* 39,990*	14 730* 32,470*	11 890* 26,210*	11 250* 24,800*	8390 18,490	—	—	6360* 14,020*	5280 11,640
4400 mm 14'5"	H1800X 5'10"	kg lb	13 100* 30,250*	13 100* 30,250*	18 390* 40,540*	18 390* 40,540*	14 690* 32,390*	11 990* 26,430*	11 150* 24,580*	8400 18,520	8820* 19,440*	6170 13,600	4260* 9390*	4260* 9390*
3400 mm 11'2"	J1780X 5'10"	kg lb	—	—	18 580* 40,960*	18 580* 40,960*	14 650* 32,300*	12 360* 27,250*	11 110* 24,490*	8650 19,070	8890* 19,600*	6350 14,000	2630* 5790*	2630* 5790*

Stick	Bucket	4.5 m (15')		6.0 m (20')		7.5 m (25')		9.0 m (30')		10.5 m (35')		At Max. Reach		
		Front	Side	Front	Side	Front	Side	Front	Side	Front	Side	Front	Side	
5500 mm 18'1"	H1380T 4'6"	kg lb	13 850 29,750	13 850 29,750	16 070* 35,430*	11 820* 26,060*	12 270* 27,050*	8350 18,410	9780* 21,560*	6200 13,670	—	—	4410* 9720*	4410* 9720*
4400 mm 14'5"	H1800X 5'10"	kg lb	13 550 29,150	13 550 29,150	16 320* 35,980*	12 160* 26,810*	12 470* 27,490*	8640 19,050	10 030* 22,110*	6470 14,260	—	—	5600* 12,340*	4540 10,010
3400 mm 11'2"	J1780X 5'10"	kg lb	13 950 27,800	13 950 27,800	16 160* 35,630*	12 270* 27,050*	12 310* 27,140*	8710 19,200	9920* 21,870*	6500 14,330	7830* 17,260*	4990 11,000	4070* 8970*	4070* 8970*

375

Mass Boom • 610 mm

Stick	Bucket	4.5 m (15')		6.0 m (20')		7.5 m (25')		9.0 m (30')		At Max. Reach				
		Front	Side	Front	Side	Front	Side	Front	Side	Front	Side			
4100 mm 13'5"	J2040X 6'8"	kg lb	23 650 54,750	23 650 54,750	19 430* 42,840*	18 860* 41,580*	16 080* 35,450*	11 890* 26,210*	12 320* 27,160*	8390 18,490	—	—	6880* 15,170*	5280 11,640
3400 mm 11'2"	J2210X 7'3"	kg lb	22 450 52,050	22 450 52,050	19 710* 43,460*	19 060* 42,020*	16 030* 35,340*							



Track

Caterpillar designed and built, track-type undercarriage unique to excavators. Robot-welded, pentagonal track roller frames with hydraulic adjusters. Sealed and lubricated rollers and idlers. Sealed track with triple-grouser shoes. Self-cleaning, apex shoes available.

	350	350 L	
Number of shoes, each side	47	51	
Number of track rollers, each side	8	9	
Overall track length	5110 mm (16'9")	5570 mm (18'3")	
Gauge (Extended)	3000 mm (9'10")	3000 mm (9'10")	
Gauge (Retracted)	2550 mm (8'4")	2550 mm (8'4")	
Widths of available shoes			
	Triple grouser	600 mm (24")	600 mm (24")
		750 mm (30")	750 mm (30")
	900 mm (36")	900 mm (36")	
Double grouser	600 mm (24")	600 mm (24")	
	750 mm (30")	750 mm (30")	
Ground clearance	730 mm (2'5")	730 mm (2'5")	



Swing Mechanism

Two fixed-displacement, axial-piston motors power swing mechanism. Triple-planetary, double-reduction gear sets drive pinion. Pinions are enclosed in grease bath to keep contaminants out and to extend service intervals. Releasing swing control cuts hydraulic power to swing motors and acts as a brake. Moving swing lever in opposite direction also will stop the swing. Automatic swing brake is spring applied and hydraulically released. Automatic, oil-disc brake applies four seconds after swing control is released. Shipping lock pins upperstructure to carbody to prevent rotation during transport.

Swing torque.....	18 500 kg-m(133,800 lb-ft)
Swing speed.....	5.8 RPM



Service Refill Capacities

	Liters	U.S. Gallons
Fuel Tank	700	(185)
Cooling System	73	(19.2)
Lubrication:		
Engine oil	30	(7.9)
Swing drive	8	(2.1)
Final drives (each)	16	(4.2)
Hydraulic system (includes tank)	520	(137)
Hydraulic Tank	240	(63.4)



Major Component Weights

Upperstructure

(without counterweight, with operator & full fuel)
.....13 060 kg(28,790 lb)

Counterweight

Reach boom6200 kg(13,670 lb)
Mass excavation boom.....6200 kg(13,670 lb)

Undercarriage

Standard
(with 600 mm(24") shoes).....18,300 kg(40,340 lb)
Long
(with 750 mm(30") shoes).....19 950 kg(43,980 lb)

Boom (includes pins and lines, excludes cylinders)

Reach 7200 mm(23'8").....4940 kg(10,890 lb)
Mass excavation 6700 mm(22'0") .4940 kg(10,890 lb)

Stick

Stick nomenclature consists of three elements. The first element is a letter that indicates which boom the stick will fit. The second element is a number. It indicates the length in meters. The third element is a letter. It tells which family of buckets will fit the stick. For example, the R4.8F stick is a 4.8 meter stick which fits the reach boom and uses "F" family buckets.

(for Reach 7200 mm(23'8") Boom*)

R4.8F1990 kg(4,390 lb)
R3.6F1510 kg(3,330 lb)
R3.1F.....1410 kg(3,110 lb)

(for Mass excavation 6700 mm(22'0") Boom*)

M3.7F.....1800 kg(3,970 lb)
M3.0G1610 kg(3,550 lb)
M2.4G1570 kg(3,460 lb)

*includes pins and lines.

6/6/01

ATT: SLAVKO

FROM: DAN AMARUSO

Excavators Lifting Capacities At Ground Level
● 350L

Japan/U.S. Sourced
50L

Mass Boom ● 750 mm (30") Triple Grousers

Stick	Bucket	3.0 m (10')		4.5 m (15')		6.0 m (20')		7.5 m (25')		9.0 m (30')		At Max. Reach		
		Front	Side	Front	Side	Front	Side	Front	Side	Front	Side	Front	Side	
3700 mm 12'2"	F1735X 5'8"	kg lb	6850* 15,550*	6850* 15,550*	19 650* 45,700*	19 000* 40,750*	14 900* 32,200*	12 000* 25,750*	11 350* 24,550*	8400 18,050	9150* 19,750*	6200 13,300	2700* 5950*	2700* 5950*
2950 mm 9'8"	G1770X 5'10"	kg lb	—	—	18 400* 42,900*	18 400* 39,550	14 900* 32,150*	11 600* 24,850	11 300* 24,400*	8100 17,400	8950* 19,300*	5950 12,700	4350* 9550*	4350* 9550*
2400 mm 7'10"	G1895MX 6'3"	kg lb	—	—	18 000* 42,150*	18 000* 39,050	14 850* 32,100*	11 450* 24,550	11 300* 24,450*	8050 17,200	—	—	6400* 14,150*	5050 11,100

Belgium Sourced
150L

Reach Boom ● 750 mm (30") Track Shoes

Stick	Bucket	4.5 m (15')		6.0 m (20')		7.5 m (25')		9.0 m (30')		10.5 m (35')		At Max. Reach		
		Front	Side	Front	Side	Front	Side	Front	Side	Front	Side	Front	Side	
2.7 m 8'10"	2.4 m³ 3.1 yd³	kg lb	8200* 18,080*	8200* 18,080*	14 720* 32,450*	11 820* 26,060	11 210* 24,710*	8350 18,410	8900 19,620	6200 13,670	—	—	4020* 8860*	4020* 8860*
3.1 m 10'2"	2.2 m³ 2.87 yd³	kg lb	12 360* 27,250*	12 360* 27,250*	14 980* 33,030*	12 160* 26,810	11 420* 25,180*	8640 19,050	9150* 20,170*	6470 14,260	—	—	5160* 11,370*	4540* 10,010*
3.6 m 11'10"	2.0 m³ 2.6 yd³	kg lb	13 790* 30,400*	13 790* 30,400*	14 830* 32,700*	12 270* 27,050	11 270* 24,850*	8710 19,200	9050* 19,950*	6500 14,330	7250* 15,980*	4990 11,000	3720* 8200*	3720* 8200*
4.8 m 15'9"	1.8 m³ 2.3 yd³	kg lb	16 570* 36,530*	16 570* 36,530*	13 980* 30 820*	12 650* 27,890	10 620* 23,410*	8950 19,730	8580* 18,910*	6600 14,550	7220* 15,920*	5100 11,240	2810* 6190*	2810* 6190*

Mass Boom ● 750 mm (30") Track Shoes

Stick	Bucket	3.0 m (10')		4.5 m (15')		6.0 m (20')		7.5 m (25')		9.0 m (30')		At Max. Reach		
		Front	Side	Front	Side	Front	Side	Front	Side	Front	Side	Front	Side	
2.4 m 7'10"	2.4 m³ 3.1 yd³	kg lb	—	—	18 140* 39,990*	18 140* 39,990*	14 730* 32,470*	11 890* 26,210	11 250* 24,800*	8390 18,490	—	—	6360* 14,020*	5280 11,640
3.0 m 9'10"	2.4 m³ 3.1 yd³	kg lb	—	—	18 390* 40,540*	18 390* 40,540*	14 690* 32,390*	11 990* 26,430	11 150* 24,580*	8400 18,520	8820* 19,440*	6170 13,600	9390* 9390*	9390*
3.7 m 12'2"	2.2 m³ 2.87 yd³	kg lb	5990* 13,200*	5990* 13,200*	18 580* 40,960*	18 580* 40,960*	14 650* 32,300*	12 360* 27,250	11 110* 24,490*	8650 19,070	8890* 19,600*	6350 14,000	2630* 5790*	2630* 5790*

350L Heavy Lift

Reach Boom ● 750 mm (30") Track Shoes

Stick	Bucket	4.5 m (15')		6.0 m (20')		7.5 m (25')		9.0 m (30')		10.5 m (35')		At Max. Reach		
		Front	Side	Front	Side	Front	Side	Front	Side	Front	Side	Front	Side	
2.7 m 8'10"	2.4 m³ 3.1 yd³	kg lb	8860* 19,530*	8860* 19,530*	16 070* 35,430*	11 820* 26,060	12 270* 27,050*	8350 18,410	9780* 21,560*	6200 13,670	—	—	4410* 9720*	4410* 9720*
3.1 m 10'2"	2.2 m³ 2.87 yd³	kg lb	13 270* 29,260*	13 270* 29,260*	16 320* 35,980*	12 160* 26,810	12 470* 27,490*	8640 19,050	10 030* 22,110*	6470 14,260	—	—	5600* 12,340*	4540 10,010
3.6 m 11'10"	2.0 m³ 2.6 yd³	kg lb	14 790* 32,610*	14 790* 32,610*	16 160* 35,630*	12 270* 27,050	12 310* 27,140*	8710 19,200	9920* 21,870*	6500 14,330	7830* 17,260*	4990 11,000	4070* 8970*	4070* 8970*
4.8 m 15'9"	1.8 m³ 2.3 yd³	kg lb	17 990* 39,660*	17 990* 39,660*	15 240* 33,600*	12 650* 27,890	11 620* 25,620*	8950 19,730	9420* 20,771*	6660 14,680	7220* 15,920*	5100 11,240	2810* 6190*	2810* 6190*

Mass Boom ● 750 mm (30") Track Shoes

Stick	Bucket	3.0 m (10')		4.5 m (15')		6.0 m (20')		7.5 m (25')		9.0 m (30')		At Max. Reach		
		Front	Side	Front	Side	Front	Side	Front	Side	Front	Side	Front	Side	
2.4 m 7'10"	2.4 m³ 3.1 yd³	kg lb	—	—	19 430* 42,840*	18 860* 41,580	16 080* 35,450*	11 890* 26,210	12 320* 27,160*	8390 18,490	—	—	6880* 15,170*	5280 11,640
3.0 m 9'10"	2.4 m³ 3.1 yd³	kg lb	—	—	19 710* 43,460*	19 060* 42,020	16 030* 35,340*	11 990* 26,430	12 210* 26,920*	8400 18,520	9710* 21,410*	6170 13,600	4670* 10,290*	4670* 10,290*
3.7 m 12'2"	2.2 m³ 2.87 yd³	kg lb	6530* 14,390*	6530* 14,390*	19 920* 43,920*	19 650* 43,320	15 970* 35,210*	12 360* 27,250	12 150* 26,790*	8650 19,070	9770* 21,540*	6350 14,000	2930* 6460*	2930* 6460*

*Load limited by hydraulic capacity rather than tipping.

Japan/U.S. Sourced

375 ● Reach Boom ● 610 mm

Stick	Bucket	4.5 m (15')	
		Front	Side
5500 mm 18'1"	H1380T 4'6"	kg lb	10 400* 24,050*
4400 mm 14'5"	H1800X 5'10"	kg lb	9600* 22,250*
3400 mm 11'2"	J1780X 5'10"	kg lb	—
2900 mm 9'6"	J1865X 6'1"	kg lb	—

Stick	Bucket	10.5 m (35')	
		Front	Side
5500 mm 18'1"	H1380T 4'6"	kg lb	13 650* 29,300*
4400 mm 14'5"	H1800X 5'10"	kg lb	13 350* 28,600*
3400 mm 11'2"	J1780X 5'10"	kg lb	12 700* 27,250*
2900 mm 9'6"	J1865X 6'1"	kg lb	12 650* 27,100*

375 ● GP Boom ● 610 mm

Stick	Bucket	4.5 m (15')	
		Front	Side
5500 mm 18'1"	H1380T 4'6"	kg lb	13 700* 31,600*
4400 mm 14'5"	H1800X 5'10"	kg lb	13 100* 30,250*
3400 mm 11'2"	J1780X 5'10"	kg lb	—

Stick	Bucket	10.5 m (35')	
		Front	Side
5500 mm 18'1"	H1380T 4'6"	kg lb	13 850* 29,750*
4400 mm 14'5"	H1800X 5'10"	kg lb	13 550* 29,150*
3400 mm 11'2"	J1780X 5'10"	kg lb	12 950* 27,800*

375 ● Mass Boom ● 610 mm

Stick	Bucket	4.5 m (15')	
		Front	Side
4100 mm 13'5"	J2040X 6'8"	kg lb	23 650* 54,750*
3400 mm 11'2"	J2210X 7'3"	kg lb	22 450* 52,050*
2900 mm 9'6"	J2390MX 7'10"	kg lb	20 850* 48,450*

*Load limited by hydraulic capacity rather than tipping.

H. O. Penn Chris Fisher

Excavators

Lifting Capacity At Ground Level

• 350 L

Japan Sourced

350 L • Reach Boom • 750 mm (30") Triple Grousers

Stick	Bucket		3 m 10'0"		4.5 m 15'0"		6 m 20'0"		7.5 m 25'0"	
			Front	Side	Front	Side	Front	Side	Front	Side
4800 mm 15'9"	F1218T 4'0"	kg lb	5850* 13,250*	5850* 13,250*	16 500* 38,250*	16 500* 38,250*	14 200* 30,900*	12 100 29,950	10 800* 23,900*	8550 18,300
3900 mm 11'10"	F1410T 4'8"	kg lb	—	—	13 850* 32,100*	13 850* 32,100*	15 150* 32,700*	11 950 26,868	11 550* 24,880*	8450 18,200
3100 mm 10'2"	F1735X 5'3"	kg lb	—	—	12 450* 29,000*	12 450* 29,000*	15 250* 32,980*	11 750 26,900	11 650* 25,150*	8550 17,850

Stick	Bucket		9 m 30'0"		10.5 m 35'0"		At Max. Reach	
			Front	Side	Front	Side	Front	Side
4800 mm 15'9"	F1218T 4'0"	kg lb	8700* 18,880*	6350 13,550	7250* 15,900*	4850 10,380	2850* 6200*	2850* 6200*
3900 mm 11'10"	F1410T 4'8"	kg lb	8300* 20,060*	6350 13,550	7250* 12,250*	4850 10,400	3750* 8250*	3750* 8250*
3100 mm 10'2"	F1735X 5'3"	kg lb	9350* 20,200*	6250 13,480	—	—	5250* 11,550*	4400 9700

350 L • Mass Boom • 750 mm (30") Triple Grousers

Stick	Bucket		3 m 10'0"		4.5 m 15'0"		6 m 20'0"		7.5 m 25'0"	
			Front	Side	Front	Side	Front	Side	Front	Side
3700 mm 12'2"	F1735X 5'8"	kg lb	8900* 19,680*	6900* 15,680*	19 700* 46,800*	19 000 40,750*	15 000* 32,400*	12 000 25,750	11 450* 24,700*	8450 18,100
2950 mm 9'8"	G1770X 5'10"	kg lb	—	—	18 450* 43,050*	18 450 39,550	14 950 32,300*	11 900 24,900	11 350* 24,880*	8100 17,400
2400 mm 7'10"	G1895M 5'3"	kg lb	—	—	18 050* 42,250*	18 050* 39,060*	14 300* 32,250*	11 450 24,600	11 400* 24,580*	8050 17,250

Stick	Bucket		9 m 30'0"		10.5 m 35'0"		At Max. Reach	
			Front	Side	Front	Side	Front	Side
3700 mm 12'2"	F1735X 5'8"	kg lb	9200* 19,800*	6250 13,550	—	—	2750* 6080*	2750* 6080*
2950 mm 9'8"	G1770X 5'10"	kg lb	9000* 19,450*	5850 12,780	—	—	4380* 9600*	4380* 9600*
2400 mm 7'10"	G1895M 5'3"	kg lb	—	—	—	—	6450* 14,150*	5050 11,150

*Load limited by hydraulic capacity rather than tipping.

SPECIFICATIONS



Caterpillar Engine

Flywheel power
at 2000 RPM213 kW (286 HP)

Kilowatts (kW) is the International System of Units equivalent to horsepower.

Net power at the flywheel of the machine engine is based on standard air conditions of 25°C (77° F) and 99 kPa/29.32 in Hg. dry barometer. Power is based on using 35° API gravity fuel having an LHV of 42 780 kJ/kg(18,390 Btu/lb) when used at 30°C/86° F (ref. a density of 838.9g/L(7.001 lb/U.S. gal)). Net power advertised is the power available at the flywheel when the engine is equipped with fan, air cleaner, muffler and alternator. No derating is required up to 2300 m(7,550 ft) altitude.

Caterpillar four-stroke-cycle, 3306 turbocharged ATAAC diesel engine with six cylinders, 121 mm(4.8") bore, 152 mm(6.0") stroke and 10.5 liters(640 in³) displacement.

Direct-injection fuel system with injection pump. Cam-turned and tapered, aluminum-alloy pistons have three rings each and are oil cooled. Connecting rods are tapered.

Deep skirted block, internally cast intake manifold, and spacer plate design combined with simplicity and low weight make this engine ideal for hydraulic excavator applications. New steel camshaft with roller cam followers significantly improves top end reliability. Standard full range governor.

Direct-electric, 24-volt starting system with a 75-amp alternator, 7.5 kW starter and two 12-volt, 150-amp-hour batteries.



Hydraulic System

Two variable-displacement, axial-piston pumps power the boom, stick, bucket and travel. A third pump powers the swing circuit. One, single-section, gear-type pump powers the pilot circuit.

Main implement system:

Maximum flow2 X 335 liters/min(2 X 89 GPM)

Maximum pressure:

Implements314 bar(4,550 psi)

Travel343 bar(4,980 psi)

Swing System:

Maximum flow1 X 290 liters/min (1 X 77 GPM)

Maximum pressure270 bar (3910 psi)

Maximum pressure.....34 bar(498 psi)

Cylinders, bore and stroke:

Boom (2).....170 X 1550 mm(6.7" X 61.0")

Stick (1).....180 X 2010 mm(7.1" X 79.1")

Bucket (1):

F family160 X 1467 mm(6.3" X 57.8")

G family180 X 1372 mm(7.1" X 54.0")

Snubbers are used at the rod ends of the boom cylinders and at both ends of the stick cylinders.



Controls

Two joystick hand levers actuate boom, stick, bucket and swing. (SAE pattern.)

Right lever: Move forward and backward to lower and raise boom. Move left and right to control bucket curl and dump. Button on top is automatic engine control system's manual switch. Operator can increase or decrease engine speed by pushing the button.

Left lever: Move forward and backward to move stick out and in. Move left and right to control direction of swing. Button on top controls horn.

Oblique movement of either lever operates two functions simultaneously. Manually applied lever on left console cuts off pilot pressure for joysticks and travel controls and electrical power for engine starting circuit.

Monitor panel contains switches for power mode selector, automatic engine control, lights, windshield wiper, windshield washer, travel speed selector and alarm cancel. Blind switch for troubleshooting also is located on monitor panel.



Steering

Two rocker pedals with detachable hand levers control steering and travel functions. Controls are pilot-operated for reduced efforts. Left pedal and lever control left track; right pedal and lever control right track. When idlers are in front: (1) Pushing both pedals or levers forward moves the excavator straight ahead. (2) Rocking both pedals or pulling both levers backward moves the excavator straight back. (3) Moving one pedal or lever more than the other, either forward or backward, results in a gradual turn. (4) Moving one pedal or lever forward and the other pedal or lever backward counter-rotates the tracks for spot turns.



Brakes

Two multiple-disc brakes are used on the final drive input shafts. Spring-applied, hydraulically released. Actuating a travel control simultaneously releases the brakes. When the controls are released, the brakes automatically apply.



Drive

Fully hydrostatic drive. Each track is driven by an independent, two-speed, axial-piston hydraulic motor. Triple-reduction, planetary final drives are splash lubricated. Track motors, brakes and final drives are integrated in the track roller frame for protection against contact damage.

Maximum drawbar pull.....34,300 kg(75,600 lb)

Maximum travel speed4.6 km/h(2.9 mph)